

FyreSHIELD™ For Shafts & Walls



FyreSHIELD™ is a proudly Australian Made and Owned access panel system which has been designed and tested to be built into partition walls and riser shafts.

With improved fire and acoustic performance while maintaining the signature Trafalgar Fire quality, the FyreSHIELD™ is the only access panel worth specifying and installing!



KEY FEATURES



- Fully fire tested in accordance with AS1530.4:2014
- Two way fire protection
- Fire tested in a range of common wall types and shafts
- No calcium silicate blocks required
- Australian made quality
- Fully concealed hinges
- Budget lock as standard

APPLICATIONS



Shaftwalls

- Hebel®
- WALSC AAC Panel
- Speedpanel®
- Plasterboard
- Shaftliner
- Pronto Panel®
- Concrete/Masonry
- AlphaPanel®
- Trafalgar COREX

FyreSHIELD™ PLUS is also approved for plasterboard

TRADES



TABLE OF CONTENTS

Click
page title to go to
Page



Section		Page
Benefits		3
Compliance		4
Specifications		5
Fire Resistance Level		6
FRL Tables	Approved Barriers - Shafts	7
	Approved Barriers - Walls	8
Installation	All Walls	9-10
System Range- Flanged Edge (Picture Frame)		11
System Range- Wet Wall (Set Bead)		12
Custom Order Form		13
FAQ		14
Technical Drawing	Installation Guide- FyreSHIELD™ Wall Types	15-19

BENEFITS

FyreSHIELD™


BENEFITS

The FyreSHIELD™ is the forefront of fire rated access panels at Trafalgar Fire and we are proud to be constantly improving and expanding the range of approvals.

Innovative and patented advancements have made it possible to achieve simple and compliant fire ratings for concealed-hinge fire rated access panels like never before. No cladding, no screw-fixed panels, no need for historical test data – just clever, hinged, as-tested design.

Manufactured in South Granville, using high-quality Australian sourced materials wherever possible, and most importantly fire tested to AS1530.4:2014, the FyreSHIELD™ makes fire rated access simple and compliant.

OTHER MANUFACTURERS CLAIM IT – WE TEST IT DO THE COMPARISON

System		Other Brands
Fire tested to AS1530.4:2014	✓	?
Fire tested in Pronto Panel®	✓	?
Fire tested in Speedpanel®	✓	?
Fire tested in Hebel®	✓	?
Fire tested up to 740 x 740mm size (barrier dependent)	✓	?
Fire tested concealed hinged or screw fixed wall access panels	✓	?
As-tested in both directions/two way fire protection	✓	?
Confirmed acoustic performance (Rw32 + CTr26)	✓	?
Australian Made and Owned Certified	✓	?
No additional cladding required	✓	?

COMPLIANCE FyreSHIELD™



No one knows what side of the wall a fire will occur. Fire tested access panels must be tested in both directions, once with the hinges and locking exposed to fire and once with the panel and frame architrave exposed to fire. Only then can they comply with NCC for use in walls and shafts and claim a two way fire protection.

COMPLIANCE WITH THE NATIONAL CONSTRUCTION CODE (NCC)

Formerly known as BCA

FyreSHIELD™ has been tested extensively to AS1530.4:2014 and approved in accordance with AS4072.1:2005 for a range of barrier types and applications. Changes to access panel requirements now require both the frame and door leaf to achieve insulation performance.

The frame must not exceed a **maximum temperature rise of more than 180°C** during the test.

The leaf must not exceed an **average temperature rise of more than 140°C** during the test.

Fire tested in both directions in accordance with AS1530.4:2014.

NCC Clause C3.13 allows a reduced insulation level for shaft applications of 30 minutes, reducing the complexity required for this application.

Improvements in the materials and designs for the FyreSHIELD™ range ensure compliance can be achieved without any additional materials, and that the key requirements for the access panels can be easily inspected after installation.

As with all passive fire installations, the fire stopping system used must be installed as per the manufacturer's instructions and test/assessment reports otherwise the end result will not be compliant. Please refer to each individual product manual for specific installation instructions which reflect how the systems have been tested and approved.

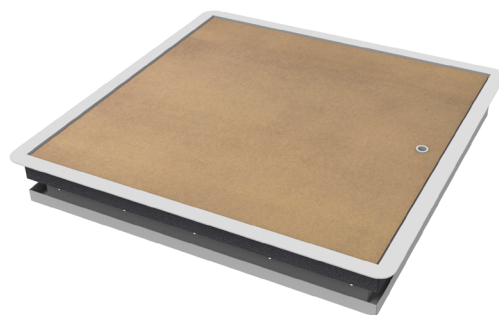
TEST AND ASSESSMENT REPORTS

[FyreSHIELD™ access panels \(including FyreSHIELD™ PLUS\)- FAS200221- All Systems in one place.](#)

Compliance will only be achieved when the installation on site mirrors the tested system and all elements are correct. Please refer to the barrier product manuals and reports as well as the FyreSHIELD™ system to ensure all aspects are correct.

SPECIFICATIONS

FyreSHIELD™



SPECIFICATIONS



Fire rating	<p>The hinged FyreSHIELD is suitable for use in 2 hour shafts as per NCC section C3.13</p> <ul style="list-style-type: none">• Shaftwall Systems (CH-Style Plasterboard)• Plasterboard single and double layer systems• Hebel®• Speedpanel®• Pronto Panel®• AlphaPanel®• Concrete/Masonry• WALSC AAC Panel• Trafalgar COREX <p>(For all other walls where full FRL is needed, use FyreShield ScrewFixed Option.)</p>
Door Panel	<p>Trafalgar Fire's paintable panel incorporating FyreBOARD Maxilite™ with optional patented RAKBAK fire and acoustic upgrade (refer to FyreSHIELD™ Plus)</p>
Frame	<p>Fully welded, fully primed, steel frame with polymeric flange</p>
Cut-Out Size	<p>Our panels are sized to suit the nominal opening size (Eg: 600 x 600mm panel is supplied 595x595mm)</p>
Frame Type	<p>Flanged Edge (Architrave/Picture Frame/Feathered Edge)</p> <p>Wet Wall (Set Bead/Concealed Frame) for plastering</p>
Hinge	<p>Fully concealed hinges, screw fixed panel available as a custom order</p>
Lock	<p>Budget square key lock as standard.</p> <p>Kaba Nightlatch and Screw Fixed are available as a custom order</p>
Also Available	<p>Trafalgar Fire can custom manufacture to meet your specifications. Trafalgar Access also supply a comprehensive range of metal, acoustic, customwood, security and speciality access panels- www.taccess.com.au</p>

FIRE RESISTANCE LEVEL

FyreSHIELD™

FIRE RATING – HOW IS FIRE PERFORMANCE MEASURED?

An FRL (fire resistance level) is a handy way of summarising the performance of a building element. It consists of 3 numbers, all given in minutes:

FRL 120/120/120

(example)



Structural Adequacy

The ability of the building element to support the weight of adjacent building elements.

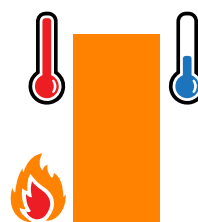
ie: a brick wall supporting a concrete floor slab above.



Integrity

The ability of an element to prevent the passage of flames and hot gasses.

ie: a plasterboard wall remaining intact and not allowing holes to form.



Insulation

The ability of an element to resist heat transfer from the exposed face to the unexposed face.

ie: a bundle of cables remaining below a set temperature limit on the unexposed side of the wall penetration system.

Penetrations are not required to have a Structural Adequacy rating and is usually expressed as a dash. For example, a penetration through a 4-hour load bearing wall would be written as -/240/240.

INTEGRITY

The FyreSHIELD™ system will achieve integrity performance for up to 2 hours physically stopping the direct spread of fire. For integrity, when FyreSHIELD™ is installed in a 60 minute wall the overall system FRL is reduced to 60 minutes.

INSULATION (TEMPERATURE RISE)

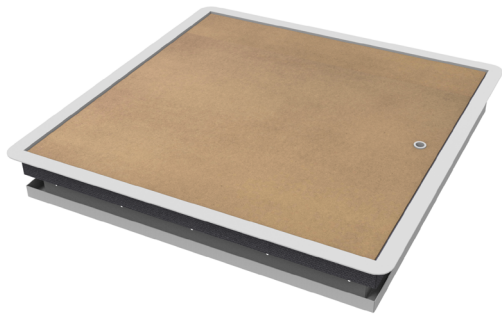
AS1530.4:2014 requires that the access panel leaf (using the average temperature rise criteria of 140°C), as well as the frame itself (using the maximum temperature rise criteria of 180°C) must achieve insulation performance equal to the wall in which they are installed unless it is a shaft wall. This change has resulted in the need for fragile, unsightly, and often conveniently ignored additional cladding or insulation to the frame.

Before the launch of the patented FyreSHIELD™ range, there were no fire rated panels that could achieve full installation and two way fire protection and maintain these stringent temperature rise limits, without additional materials.

FyreSHIELD™'s patented design allows for increased insulation performance up to 30mins, and meets the NCC requirements (C3.13) for shafts without the need for additional cladding. Higher insulation of 60mins is available with the FyreSHIELD™ PLUS variant.

FRL TABLES

Approved Barriers-SHAFTS



The NCC clause C3.13 gives a concession on the insulation rating for access panels installed into shaft walls of 30 minutes insulation.

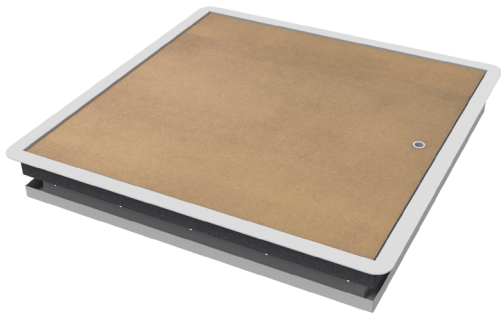
Wall Type	Barrier Specification	Maximum Size	FRL
			Shafts FyreSHIELD™
Hebel® and WALSC AAC Panel	75mm Hebel® panel 75mm WALSC AAC panel	600 x 600mm	-/90/30
Speedpanel®	78mm Speedpanel®	600 x 600mm	-/120/30
Pronto Panel®	60mm Pronto Panel®	600 x 600mm	-/90/30
Plasterboard	1 x 13mm FR plasterboard on a 64mm stud (13/64/13 wall)	600 x 600mm	-/60/30
	1 x16mm FR plasterboard on a 64mm stud (16/64/16 wall)		-/90/30
	Minimum 2 x 13mm FR plasterboard on a 64mm stud (13/13/64/13/13 wall)		-/120/30
	CH type shaftwall construction (min 25/64/13/13 wall)		-/90/30
	CH type shaftwall construction (min 25/64/16/16 wall)		-/120/30

Note: For ceilings refer to the [FyreSHIELD™ Plus Ceilings Technical Manual](#)



FRL TABLES

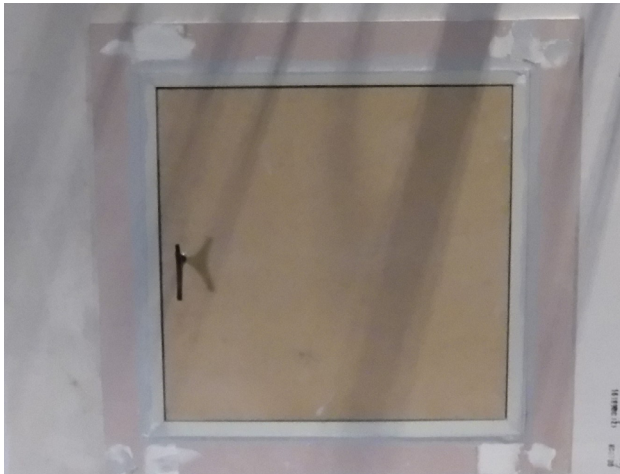
Approved Barriers-SHAFTS



The NCC clause C3.13 gives a concession on the insulation rating for access panels installed into shaft walls of 30 minutes insulation.

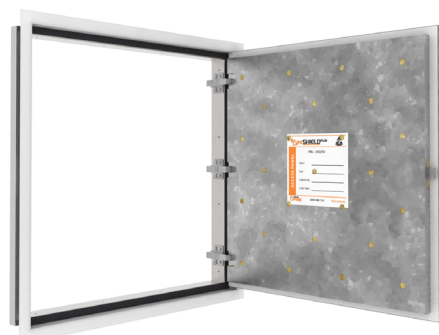
Wall Type	Barrier Specification	Maximum Size	FRL
			Shafts FyreSHIELD™
Concrete/Masonry	Minimum 116mm Concrete/Masonry wall	600 x 600mm	-/120/30
AlphaPanel	35mm AlphaPanel + 16mm FR plasterboard	600 x 600mm	-/90/30
	35mm Alphapanel + 40mm Top hat + 16mm FR plasterboard		-/90/30
	35mm AlphaPanel + 20mm Cavity + 35mm AlphaPanel		-/120/30
	35mm AlphaPanel + 50mm Cavity + 35mm AlphaPanel		-/120/30
Trafalgar Corex	2x15mm Corex on one side of 64mm stud	600 x 600mm	-/60/30
	2x20mm Corex on one side of 64mm stud		-/90/30
	2x25mm Corex on one side of 64mm stud		-/120/30

Note: For ceilings refer to the [FyreSHIELD™ Plus Ceilings Technical Manual](#)



FRL TABLES

Approved Barriers- WALLS (OTHER THAN SHAFT WALLS)

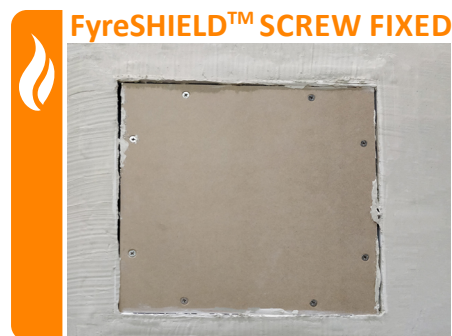
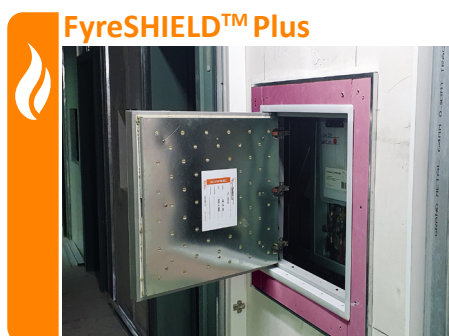


Where higher FRL's are required, the FyreSHIELD PLUS can achieve 60 minutes insulation as a hinged option. For a full 2 hour FRL, the screw fixed FyreSHIELD will achieve the required ratings as detailed below.

Wall Type	Barrier Specification	Maximum Size	FRL	
			Walls FyreSHIELD™ PLUS HINGED	Walls FyreSHIELD™ Screw Fixed
Hebel® and WALSC AAC Panel	75mm Hebel® panel 75mm WALSC AAC panel	600 x 600mm	-/90/60	-/90/90
Speedpanel®	78mm Speedpanel®	600 x 600mm	-/120/60	-/120/120
Pronto Panel®	60mm Pronto Panel®	600 x 600mm	-/90/60	-/90/90
Plasterboard	1 x 13mm FR plasterboard on a 64mm stud (13/64/13 wall)	600 x 600mm	-/60/30 or -/60/60**	-/60/60
	1x16mm FR Plasterboards on 64mm stud (16/64/16 wall)		-/90/60	-/90/90
	Minimum 2 x 13mm FR plasterboard on a 64mm stud (13/13/64/13/13 wall)		-/120/60	-/120/120
	CH type shaftwall construction (min 25/64/13/13 wall)		-/90/60	-/90/90
	CH type shaftwall construction (min 25/64/16/16 wall)		-/120/60	-/120/120

** -/60/60 available by thickening the wall with an additional layer of plasterboard around the penetration on both sides of the wall.

Note: For ceilings refer to the [FyreSHIELD™ Plus Ceilings Technical Manual](#)



FRL TABLES

Approved Barriers- WALLS (OTHER THAN SHAFT WALLS)



Where higher FRL's are required, the FyreSHIELD PLUS can achieve 60 minutes insulation as a hinged option. For a full 2 hour FRL, the screw fixed FyreSHIELD will achieve the required ratings as detailed below.

Wall Type	Barrier Specification	Maximum Size	FRL	
			Walls FyreSHIELD™ PLUS HINGED	Walls FyreSHIELD™ Screw Fixed
Concrete/Masonry	Minimum 116mm Concrete/Masonry wall	600 x 600mm	-/120/60	-/120/120
	Minimum 230mm Concrete/Masonry wall	740 x 740mm	-	-/120/120
AlphaPanel	35mm AlphaPanel + 16mm FR plaster-board	600 x 600mm	-/90/30	-/90/90
	35mm Alphapanel + 40mm Top hat + 16mm FR plasterboard		-/90/60	-/90/90
	35mm AlphaPanel + 20mm Cavity + 35mm AlphaPanel		-/120/60	-/120/120
	35mm AlphaPanel + 50mm Cavity + 35mm AlphaPanel		-/120/60	-/120/120
Trafalgar Corex	2x15mm Corex on one side of 64mm stud	600 x 600mm	-/60/60	-/60/60
	2x20mm Corex on one side of 64mm stud		-/90/60	-/90/90
	2x25mm Corex on one side of 64mm stud		-/120/60	-/120/120

**-/60/60 available by thickening the wall with an additional layer of plasterboard around the penetration on both sides of the wall.

Note: For ceilings refer to the [FyreSHIELD™ Plus Ceilings Technical Manual](#)

INSTALLATION

ALL WALLS

PLASTERBOARD & COREX WALLS



Frame and line the opening to protect the wall cavity per manufacturers instructions. See drawings at the end of the manual for specific details for Corex. For -/60/60 in single layer walls, an additional layer of plasterboard is required overlapping around the penetration for 100mm on both sides of the wall

AAC WALLS (HEBEL®, WALSC)



Per manufacturers instructions, line the opening with the supporting Hebel® angles to the perimeter of the opening.

For a FyreSHIELD™ listed as 600 x 600mm, the frame size is 595 x 595mm. 600 x 600mm represents the ideal cut out size for the barrier it is being installed into.

SPEEDPANEL® & ALPHAPANEL®



For Speedpanel® only, line the opening with C-Track per manufacturers instructions. For both AlphaPanel® and Speedpanel® the wall must be locally thickened with plasterboard for 100mm around the penetration as per drawings at the end of this manual.

CONCRETE/MASONRY

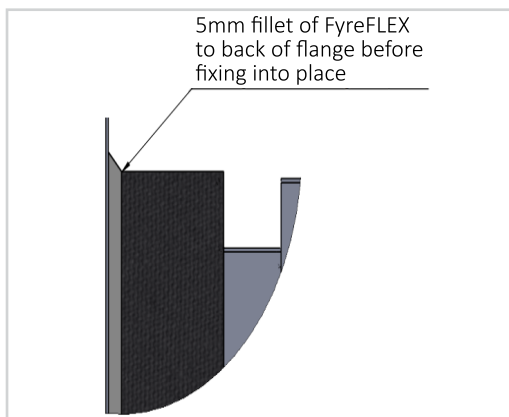


Simply cut the correct size opening in a concrete/ masonry wall. For hollow masonry walls the core must be backfilled around the penetration.

INSTALLATION

ALL WALLS

STEP 2 - SEAL



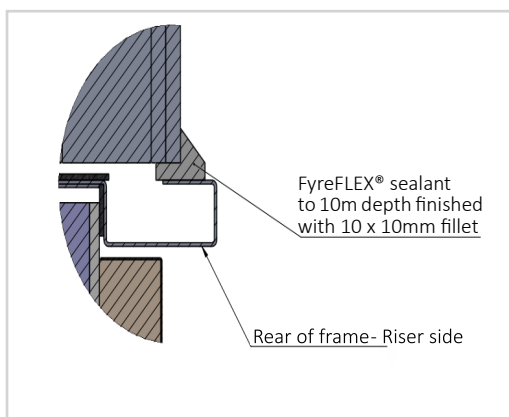
Before inserting the FyreSHIELD™ into the opening, apply a nominal bead of FyreFLEX® sealant to the back of the flanges to provide a fire, smoke and acoustic seal.

STEP 3 - FIX



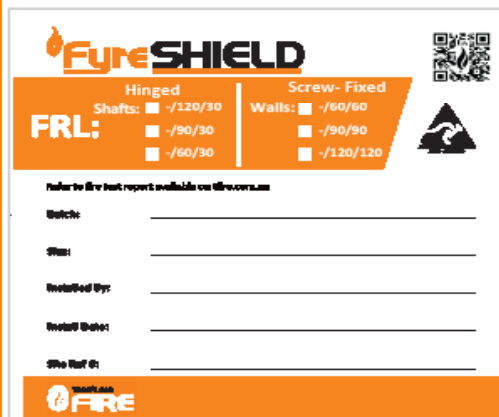
Fix the panel into the frame using appropriate fixings for the barrier. Refer to the fixing table below for fixing details.

STEP 4 - FINISH



FyreFLEX® sealant must now be applied to the rear of the panel in a 10 x 10mm fillet to seal the frame to the barrier. Refer to the drawings at the end of the manual for details.

STEP 5 - STICKER



Complete the installation sticker on the FyreSHIELD™.

FIXINGS TABLE

Barrier Type	Minimum fixings specification	Spacings
Hebel®/WALSC AAC Panel	8g x 100mm screws	300mm
Speedpanel®	10g x 40mm self-tapping screws	200mm
Pronto Panel®	10g x 100mm screws	200mm
Plasterboard	10g x 100mm plasterboard screws	200mm
Concrete/Masonry	M6 Masonry Anchor	150mm
AlphaPanel	11x50 Bugle Head Tek Screw	200mm
Trafalgar Corex	10g x 100mm plasterboard screws	150mm

Frame Type
**FLANGED EDGE
(FEATHERED EDGE)**

Picture Frame



Frame detail



Panel installed
(TLM Shown)



STANDARD STOCK

Model	Panel FE (MDF Panel + picture frame primed white)	Lock Options	Item Number	Dimensions	Frame Profile 87mm
		Hinged Door-Budget Lock (as standard)	FYRESHIELD-300-FE	300 x 300mm	✓
			FYRESHIELD-400-FE	400 x 400mm	✓
		Screw Fixed (optional)	FYRESHIELD-450-FE	450 x 450mm	✓
			FYRESHIELD-600-FE	600 x 600mm	✓
		Hinged Door-Kaba Nightlatch (optional)	FYRESHIELD-CUSTOM-FE	Any size up to 740 x 740mm and/or screw fixed. Kaba Nightlatch also available for hinged panels	✓

Note: Suitable for 2 hour fire rated shaft walls as per the NCC requirements in C3.13.

Frame Type
WET WALL
(SET BEAD)
Concealed Frame



Frame detail



Panel installed
(TLM Shown)



STANDARD STOCK


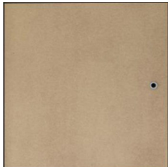

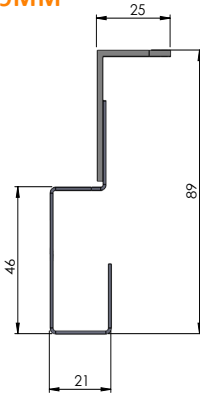





Model	Panel WW (MDF Panel + picture frame primed white)	Lock Options	Item Number	Dimensions	Frame Profile 87mm
		Hinged Door- Budget Lock (as standard) 	FYRESHIELD-300-WW	300 x 300mm	✓
		Screw Fixed (optional) 	FYRESHIELD-400-WW	400 x 400mm	✓
			FYRESHIELD-450-WW	450 x 450mm	✓
		Hinged Door- Kaba Nightlatch (optional) 	FYRESHIELD-600-WW	600 x 600mm	✓
			FYRESHIELD-CUSTOM-WW	Any size up to 740 x 740mm and/or screw fixed. Kaba Nightlatch also available for hinged panels	✓

Note: Suitable for 2 hour fire rated shaft walls as per the NCC requirements in C3.13.



CUSTOM ORDER FORM

Please complete this form for each size panel required. All panels will be manufactured 5mm smaller than the opening size in wall or ceiling to a tolerance of +/-2mm.

Frame Type	Custom Dimensions (mm)	Application	Lock
<div>WET WALL (SET BEAD) Code: FYRESHIELD-CUSTOM -WW FYRESHIELD-SCREWFIXED-CUSTOM-WW</div> <div> Set Bead for Plastering</div> <div> Panel installed</div>	<div>Height</div> <div>Width</div> <div>Maximum size 600 x 600mm, for larger sizes please refer to our Fire Rated Service Shaft manual or contact Trafalgar</div> <div>Special Instructions</div>	<div> Shafts</div> <div>FyreSHIELD is suitable for shafts where NCC C3.13 concession applies (30min insulation requirement). For full FRL applications refer to FyreSHIELD Plus.</div> <div>WALLS: up to -/120/120 with Screw Fixed door. (Refer to FRL Tables in Technical Manual)</div> <div>Frame Profile</div> <div>HINGED PROFILE 89MM </div>	<div> Budget</div> <div> Kaba Nightlatch</div> <div> Screw Fixed</div>
<div>FLANGED EDGE (FEATHERED EDGE) Code: FYRESHIELD-CUSTOM -FE FYRESHIELD-SCREWFIXED-CUSTOM-FE</div> <div> Picture Frame</div> <div> Panel installed</div>			

CUSTOMER DETAILS

Please complete this form for each size panel you require and submit for quotation to sales@tgroup.com.au

By accepting this custom product quote, you are agreeing to the manufacture of a custom product which is subject to **Trafalgar's Terms and Conditions.**

Company Name

Contact Name

Quantity | Date

E-mail | Phone

Signature

FAQ

Q Why do I need a FyreSHIELD™?

A Changes to both the NCC and AS1530.4:2014 require insulation on the frame and two way fire protection.

Q What is different between the previous FRC/FRW and FyreSHIELD™ range?

A FyreSHIELD™ incorporates a polymeric flange system to ensure the frame will maintain the maximum temperature rise requirements in accordance with AS1530.4:2014. Previous systems required additional architraves for full insulation performance whereas the **FyreSHIELD™ is a “complete” system.**

Q What is the difference between the FyreSHIELD™ and FyreSHIELD™ PLUS?

A In addition to the polymeric flange, the FyreSHIELD™ PLUS includes the patent pending RAKBACK to improve both fire and acoustic performance. These innovations allow Trafalgar Fire to apply a **hinged fire-rated access panel that can achieve the full insulation performance** required by the NCC. The FyreSHIELD™ Plus is also approved for plasterboard ceilings.

Q Do I need to buy other products?

A No, the **FyreSHIELD™ systems are bundled with a cartridge of FyreFLEX® sealant** for your convenience and to ensure compliance of the system when installed. No additional cladding is required for FyreSHIELD™.

Q I need a two-way fire-rated access panel – Can I use FyreSHIELD™?

A Yes, the FyreSHIELD™ systems have been **tested in both directions to AS1530.4:2014.**

Q Will a FyreSHIELD™ PLUS installed into a plaster board ceiling achieve a RISF rating?

A Yes, 60 minutes RISF, refer to the FyreSHIELD™ for ceilings manual.

Q Does the FyreSHIELD access panel open to 90°?

A Due to the required operation of the concealed hinge and the thickness of the door panel, to maintain FRL the door will open to a maximum of 85°


SOCIAL MEDIA

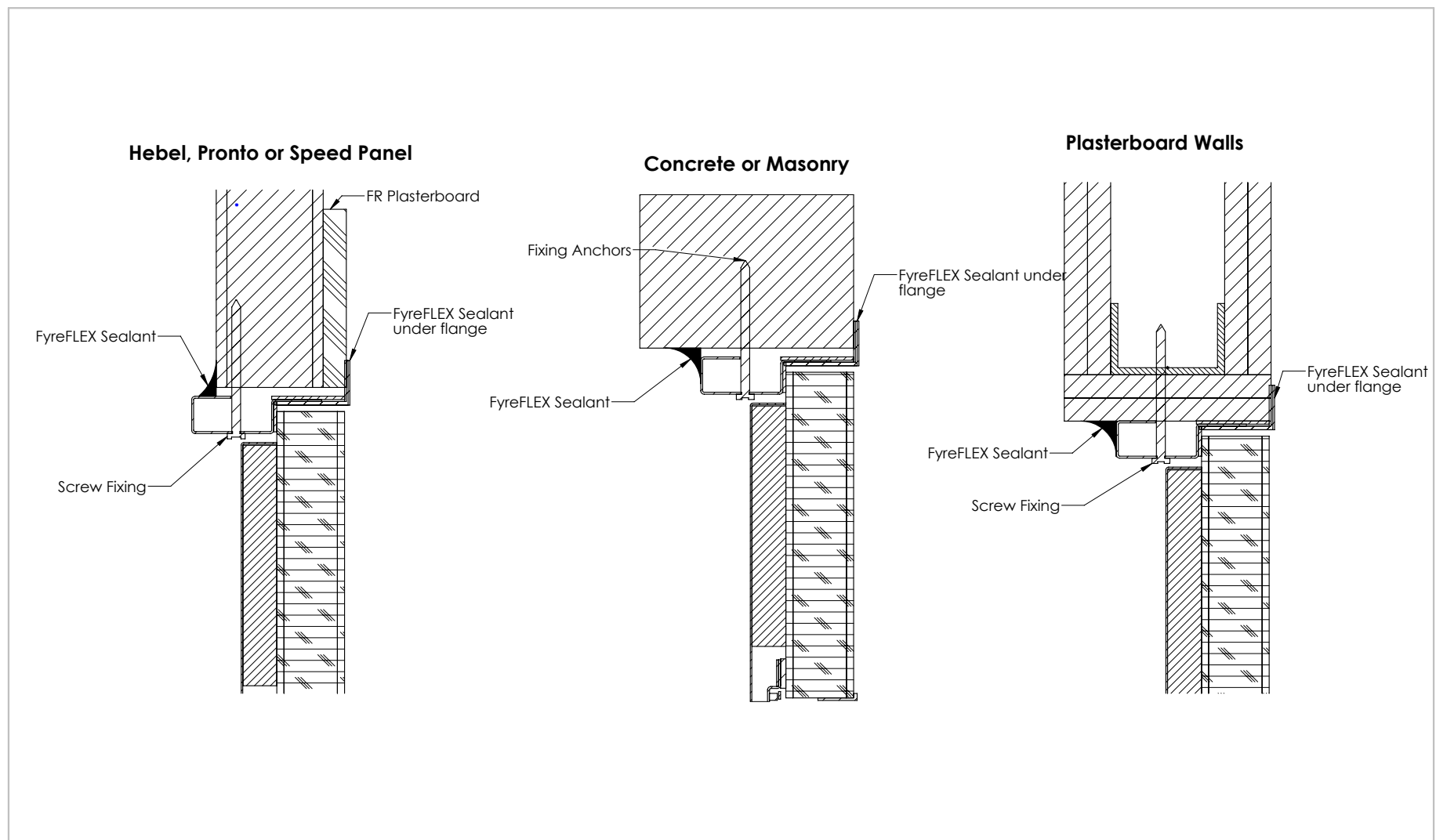



Linked 

 YouTube

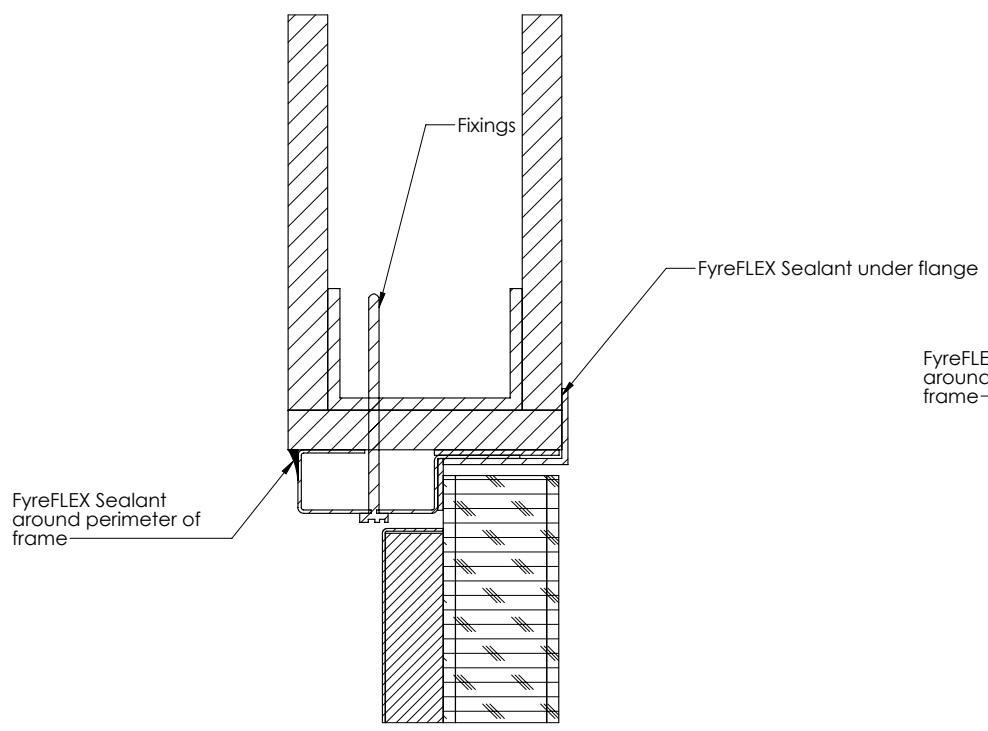
Wall Type	Fixings	Centres	Aperture Details
Plasterboard	10g x 100mm plasterboard screws	150mm centres	Frame/Line as per plasterboard manufacturers instructions
Concrete/Masonry	M6 x 100mm Bolts	150mm Centres	N/A
Hebel	8g x 100mm plasterboard screws	300mm centres	Face of wall thickenned with a 13mm x 100mm FR Plasterboard
Speed Panel	10g x 40mm self drilling screws	200mm	Wall U-channel lining per wall maufacturers instructions. Face of wall thickenned with a 13mm x 100mm FR Plasterboard
Pronto Panel	10g x 100mm bugle head needle point screws	200mm	Face of wall thickenned with a 13mm x 100mm FR Plasterboard
Alpha Panel	10g x 100mm plasterboard screws (through frame)/M6 x 50mm Bolts (through Alpha Panel)	150mm	Frame/Line as per drawings and front and/or rear of wall thickenned with FR Plasterboard as per drawings
Corex	10g x 100mm plasterboard screws	150mm	Frame/Line as per drawings

Drawing Name: Installation Guide				Test Standard: AS1530.4	Codes:	Revision:	Date:	No.:	NOTICE:
Project Title: FyreSHIELD in Various Wall Types				Fire resistance level: Wall Dependant	Drawn By: SM	<div><div>TRAFALGAR FIRE</div></div>	NOTE: ALL DIMENSIONS ARE IN MILLIMETRES (mm).		
Drawing No. : 1	Sheet: 1 of 2	Date: 26/04/2023	Scale: NTS	Based on Report No.: FAS 200221	Checked By: JH		<div><input type="checkbox"/> STANDARD DRAWING <input type="checkbox"/> PROJECT DRAWING</div>		
							<div>Trafalgar Head Office: PO BOX 545 Chester Hill NSW 2162 T: 1800 888 714 F: 1800 201 500 E: technical@tgroup.com.au W: www.tfire.com.au</div>		

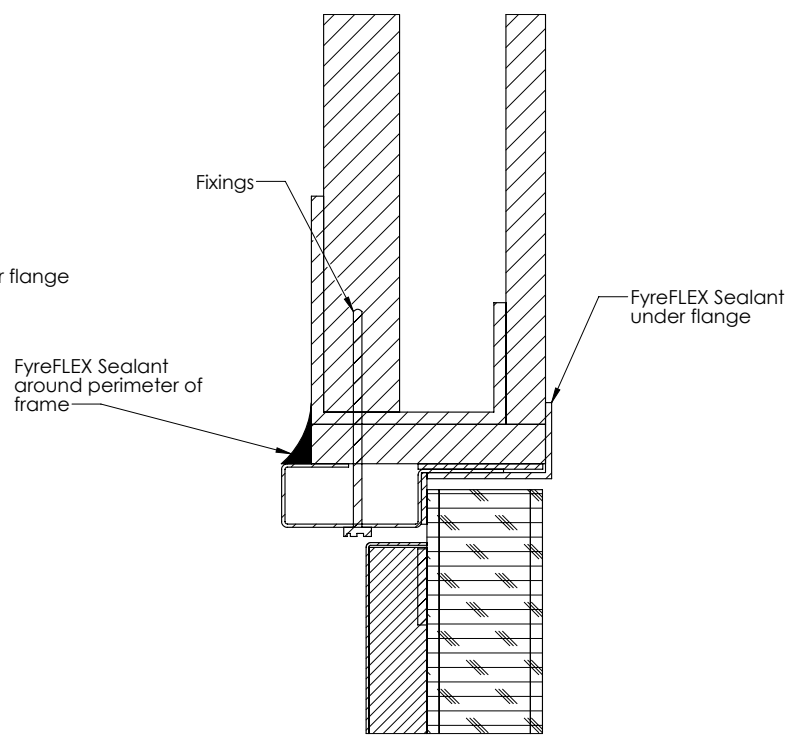



Drawing Name: Installation Guide Cont.				Test Standard: AS1530.4	Codes:	Revision:	Date:	No.:	NOTICE:
Project Title: FyreSHIELD in Various Wall Types				Fire resistance level: Wall Dependant	Drawn By: SM	<div>NOTE: ALL DIMENSIONS ARE IN MILLIMETRES (mm).</div> <div>TRAFALGAR FIRE Trafalgar Head Office: PO BOX 545 Chester Hill NSW 2162 T: 1800 888 714 F: 1800 201 500 E: technical@tgroup.com.au W: www.tfire.com.au</div>			
Drawing No. : 2	Sheet: 2 of 2	Date: 26/04/2023	Scale: NTS	Based on Report No.: FAS 200221	Checked By: JH				
					<input type="checkbox"/> STANDARD DRAWING <input type="checkbox"/> PROJECT DRAWING				

Single Layer Plasterboard Walls



Shaftliner walls

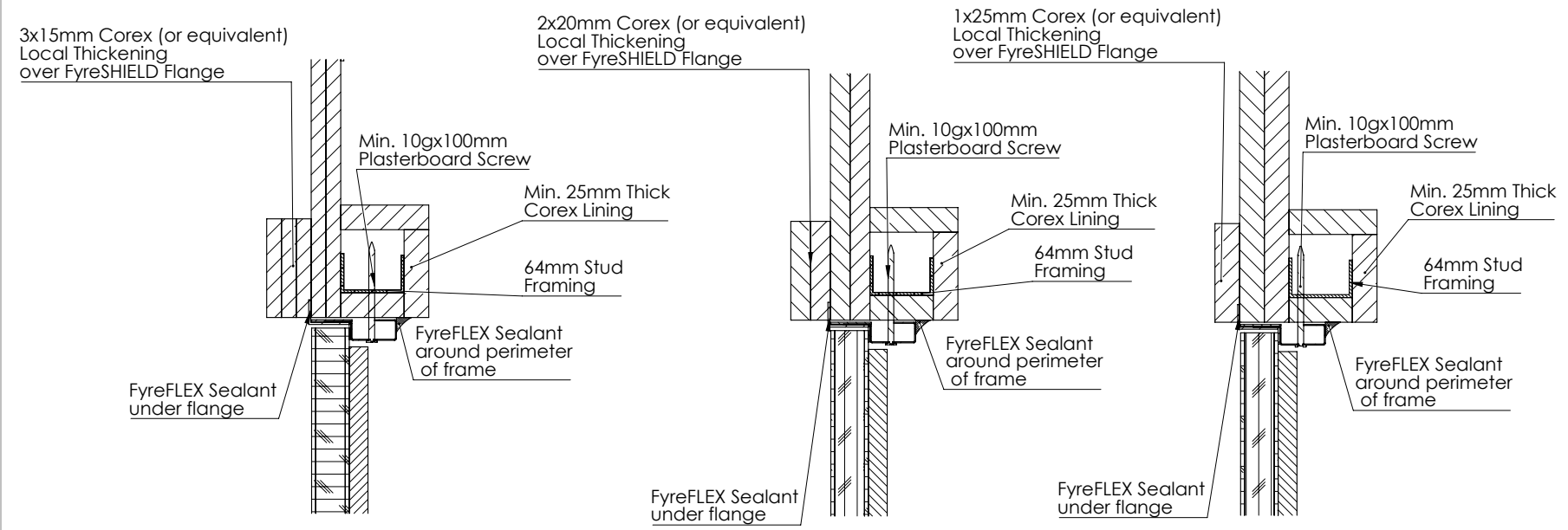


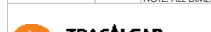
Drawing Name: Installation Guide Cont.				Test Standard: AS1530.4	Codes:	Revision:	Date:	No.:	NOTICE:
Project Title: FyreSHIELD in Various Wall Types				Fire resistance level:	Drawn By: SM	<small>(NOTE: ALL DIMENSIONS ARE IN MILLIMETRES (mm))</small>			
Drawing No. : 2	Sheet: 2 of 2	Date: 29/06/2021	Scale: NTS	Based on Report No.:	Checked By: JH	<input type="checkbox"/> STANDARD DRAWING <input type="checkbox"/> PROJECT DRAWING	<div><div>TRAFALGAR FIRE</div></div> <div>Trafalgar Head Office: PO BOX 545 Chester Hill NSW 2162 T: 1800 888 714 F: 1800 201 500 E: technical@tgroup.com.au W: www.tfire.com.au</div>		

**60 Minute
Corex Wall (2x15mm)**

**90 Minute
Corex Wall (2x20mm)**

**120 Minute
Corex Wall (2x25mm)**



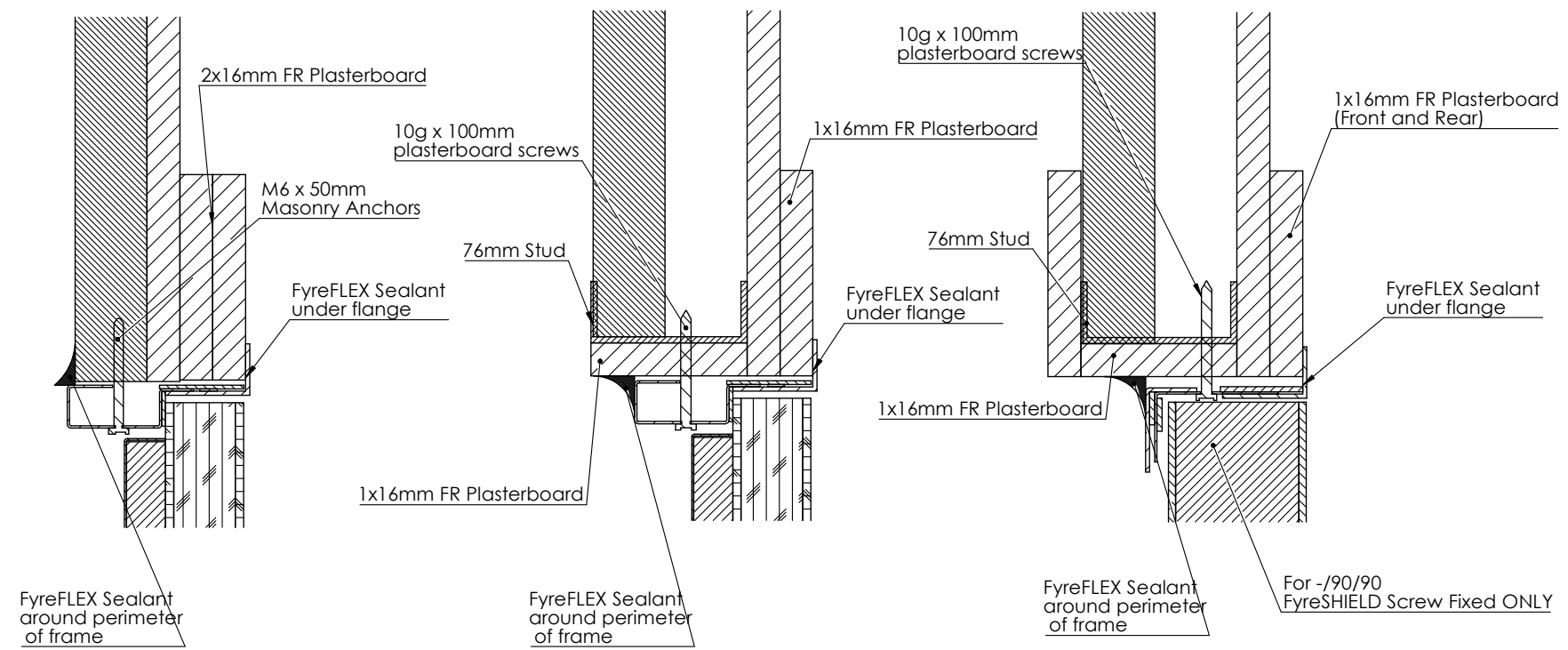
Drawing Name: Instalation Guide Cont.				Test Standard: AS1530.4	Codes:	Revision:	Date:	No.:	NOTICE:
Project Title: FyreSHIELDS in Corex Shaft				Fire resistance level:	Drawn By: DP	<small>(NOTE: ALL DIMENSIONS ARE IN MILLIMETRES (mm))</small>			
Drawing No. : 2	Sheet: 2 of 2	Date: 26/04/2023	Scale: NTS	Based on Report No.:	Checked By: JH	<input type="checkbox"/> STANDARD DRAWING <input type="checkbox"/> PROJECT DRAWING	<div><div>TRAFALGAR FIRE</div></div> <div>Trafalgar Head Office: PO BOX 545 Chester Hill NSW 2162 T: 1800 888 714 F: 1800 201 500 E: technical@tgroup.com.au W: www.tfire.com.au</div>		


Trafalgar Head Office:
PO BOX 545
Chester Hill NSW 2162
T: 1800 888 714
F: 1800 201 500
E: technical@tgroup.com.au
W: www.tfire.com.au

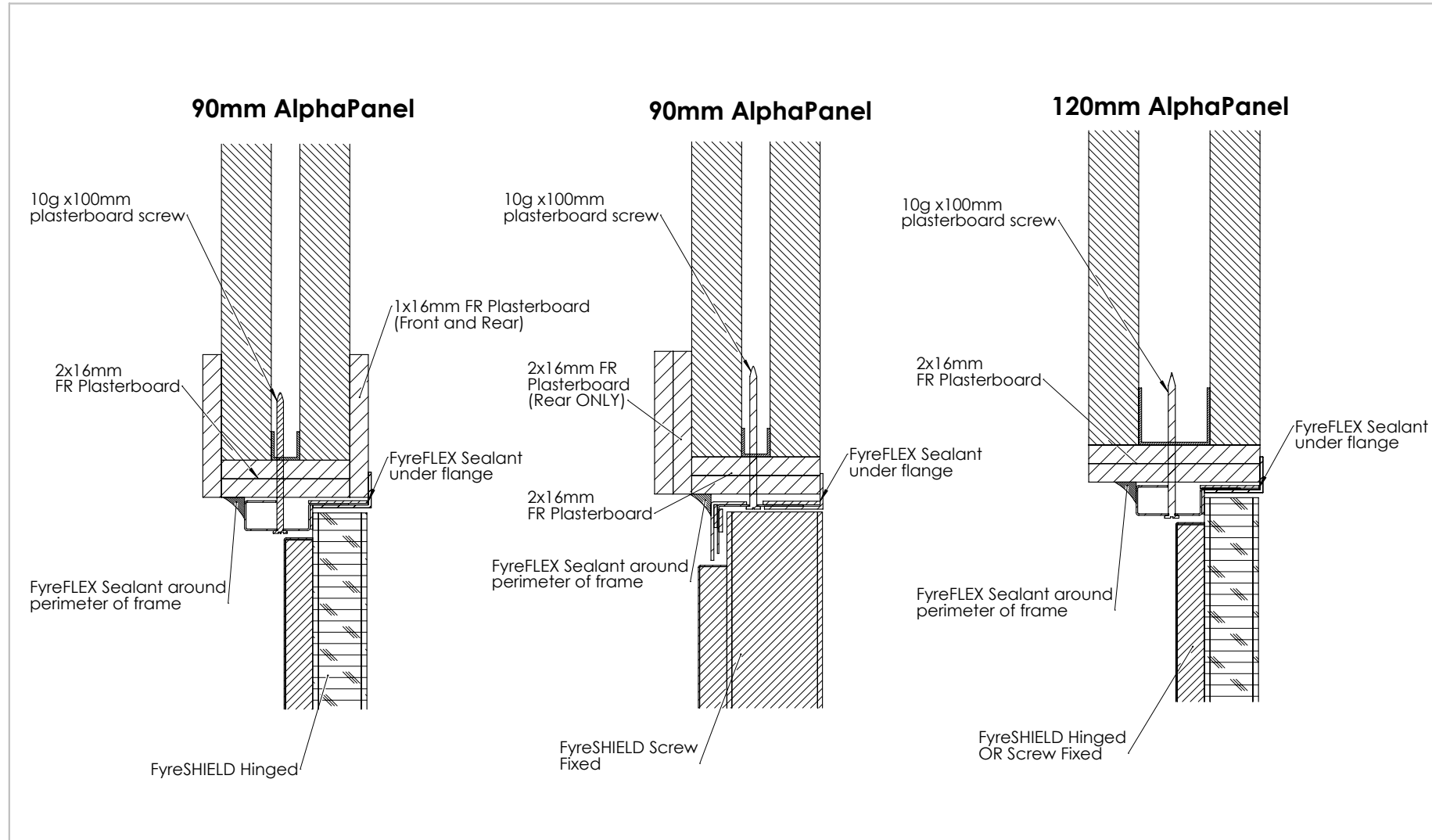
51mm AlphaPanel


91mm AlphaPanel

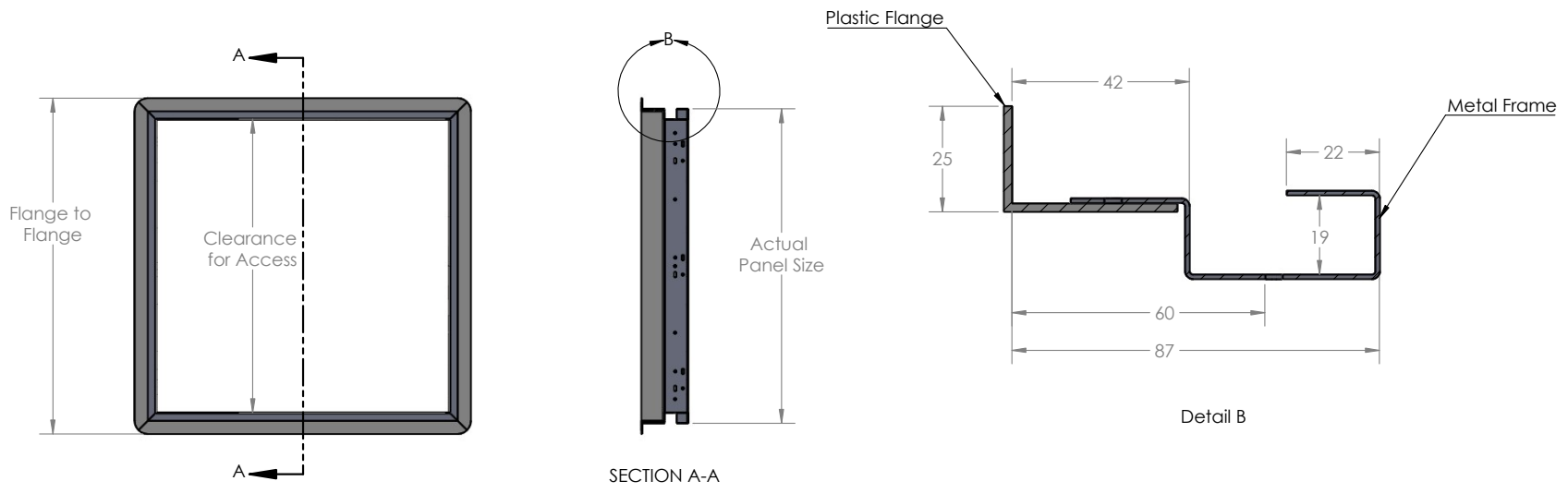
91mm AlphaPanel
(FyreSHIELD Screw Fixed)




Drawing Name: FyreSHIELD in AlphaPanel				Test Standard: AS1530.4	Codes:	Revision:	Date:	No.:	NOTICE:
Project Title: XCEM				Fire resistance level:	Drawn By: DP				NOTE: ALL DIMENSIONS ARE IN MILLIMETRES (mm).
Drawing No. : 1	Sheet: 1 of 1	Date: 26/04/2023	Scale: NTS	Based on Report No.:	Checked By: JH	<input type="checkbox"/> STANDARD DRAWING <input type="checkbox"/> PROJECT DRAWING	<div><div>TAFALGAR FIRE</div></div> <div>Trafalgar Head Office: PO BOX 545 Chester Hill NSW 2162 T: 1800 888 714 F: 1800 201 500 E: technical@tgroup.com.au W: www.tfire.com.au</div>		

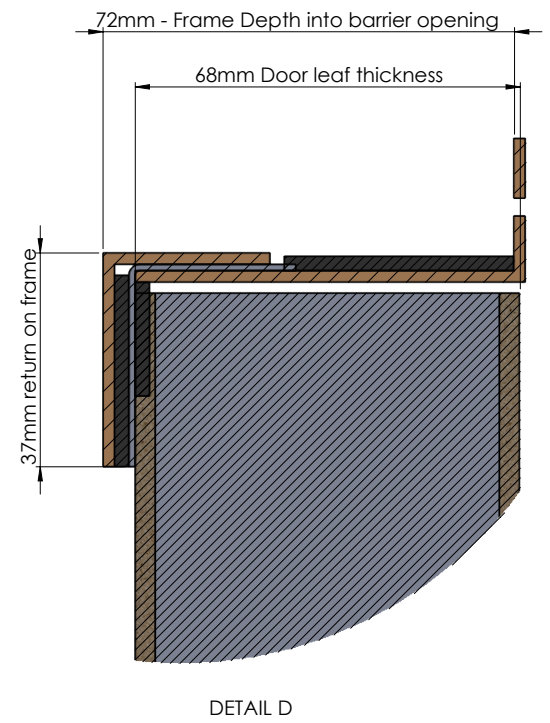
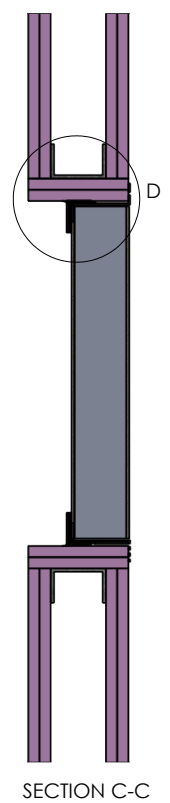



Drawing Name: Installation Guide Cont.				Test Standard: AS1530.4	Codes:	Revision:	Date:	No.:	NOTICE:
Project Title: XCEM				Fire resistance level:	Drawn By: DP				<small>(NOTE: ALL DIMENSIONS ARE IN MILLIMETRES (mm))</small>
Drawing No. : 3	Sheet: 3 of 3	Date: 26/04/2023	Scale: NTS	Based on Report No.:	Checked By: JH	<input type="checkbox"/> STANDARD DRAWING	<div><div>TRAFALGAR FIRE</div></div> <div>Trafalgar Head Office: PO BOX 545 Chester Hill NSW 2162 T: 1800 888 714 F: 1800 201 500 E: technical@tgroup.com.au W: www.tfire.com.au</div>		



Opening in wall/ceiling	Actual Panel size	Depth	Flange to Flange	Clearance opening for access
600 x 600	595 x 595	87mm	635 x 635	555 x 555
550 x 550	545 x 545	87mm	585 x 585	505 x 505
450 x 450	445 x 445	87mm	485 x 485	405 x 405
400 x 400	395 x 395	87mm	435 x 435	455 x 455
300 x 300	295 x 295	87mm	335 x 335	255 x 255

Drawing Name: FyreSHIELD Range				Test Standard: AS1530.4	Codes:	Revision:	Date:	No.:	NOTICE:
Project Title: FyreSHIELD - Clear Openings				Fire resistance level:	Drawn By: RK	<small>NOTE: ALL DIMENSIONS ARE IN MILLIMETRES (mm)</small>			
Drawing No. : 1	Sheet: 1 of 1	Date: 29/07/2021	Scale: NTS	Based on Report No.:	Checked By: JH				
						<input type="checkbox"/> STANDARD DRAWING			
						<input type="checkbox"/> PROJECT DRAWING			
						<small>Trafalgar Head Office: PO BOX 545 Chester Hill NSW 2162 T: 1800 888 714 F: 1800 201 500 E: technical@tgroup.com.au W: www.tfire.com.au</small>			



Drawing Name: Frame Profile				Test Standard: AS1530.4	Codes:	Revision:	Date:	No.:	NOTICE:
Project Title: FyreSHIELD Screw Fixed				Fire resistance level:	Drawn By: SM				<small>NOTE: ALL DIMENSIONS ARE IN MILLIMETRES (mm).</small>
Drawing No. : 1	Sheet: 1 of 1	Date: 30/03/2022	Scale: NTS	Based on Report No.:	Checked By: JH	<input type="checkbox"/> STANDARD DRAWING <input type="checkbox"/> PROJECT DRAWING	<div><div>TRAFALGAR FIRE</div><div><small>Trafalgar Head Office: PO BOX 545 Chester Hill NSW 2162 T: 1800 888 714 F: 1800 201 500 E: technical@tgroup.com.au W: www.tfire.com.au</small></div></div>		